

Symantec™ Endpoint Protection 12.1.5 Datasheet



Data Sheet: Endpoint Security

Overview

Malware has evolved from large-scale massive attacks to include Targeted Attacks and Advanced Persistent Threats that cannot be stopped by antivirus alone. It is time to move beyond antivirus. Symantec™'s unique ability to provide intelligent security leverages the collective wisdom of the world's largest Global Intelligence Network (GIN) that gathers data from millions of users and sensors. Derived from GIN, the exceptional Insight™ technology in Symantec Endpoint Protection blocks mutating threats and enables faster scan time by analysing a file's reputation. Meanwhile, SONAR™ technology stops zero-day threats by monitoring file behaviour in real time. With a single high-powered agent that integrates intelligent security technologies with strong antivirus and policy lockdown, Symantec Endpoint Protection 12.1.5 allows you to focus on your business without compromising security or performance.

Unrivalled security

Stops targeted attacks and advanced persistent threats with intelligent security and layered protection that go beyond antivirus

- Leverages the world's largest Global Intelligence Network (GIN) made up of hundreds of millions of sensors that feed data into our proactive protection technologies
- Derived from GIN, the unique Insight technology identifies file reputation by analysing key file attributes such as how often a file has been downloaded, how long has a file been there and where it is being downloaded from. This information allows us to block more threats and defend against new, mutating malware.
- SONAR technology, also powered by GIN, monitors application behaviour in real time and stops targeted attacks and zero-day threats.
- Network Threat Protection analyses incoming data streams that arrive on a user's machine via network connections and blocks threats before they hit the system.
- Symantec Endpoint Protection detects and removes more threats than any other solution in its class¹, repeatedly scoring AAA rating, the highest score, by Dennis Labs Real World A/V Test.

Blazing performance

Performance so fast your users will not know it is there.

- The Symantec Insight technology included in Endpoint Protection eliminates up to 70% of scan overheads compared to traditional solutions by accurately identifying file reputation so only at-risk files are scanned.
- Allows hardware to run faster and last longer thanks to reduced system impact.
- Reduces network load by providing flexible control over the number of connections and bandwidth.
- Out performs all products in its class in scan speed and total performance impact².

¹ AV-TEST, Product Review, Corporate Solutions for Windows 7, July/August 2013.

² PassMark Software, *Enterprise Endpoint Security Performance Benchmarks*, 2014.

Smarter management

Single management console across physical and virtual platforms with granular policy control.

- Delivers intelligent security technologies and policy lockdown features in a single high performance agent with a single management console across PC, Mac®, Linux® and virtual machines.
- Provides granular policy control with the flexibility to customise policies depending on users and their location.
- Supports remote deployment and client management for both PC and Mac making it easier to keep remote endpoints up-to-date.
- Expands traditional reporting by incorporating multi-dimensional analysis and robust graphical reporting in an easy-to-use dashboard.
- Group Update Provider reduces network overhead and decreases the time it takes to get updates by enabling one client to send updates to another, enabling more effective updates in remote locations.

5 Layers of Protection

Symantec Endpoint Protection 12.1.5 provides **5-layers of protection**- 1) network 2) file 3) reputation 4) behaviour and 5) repair:

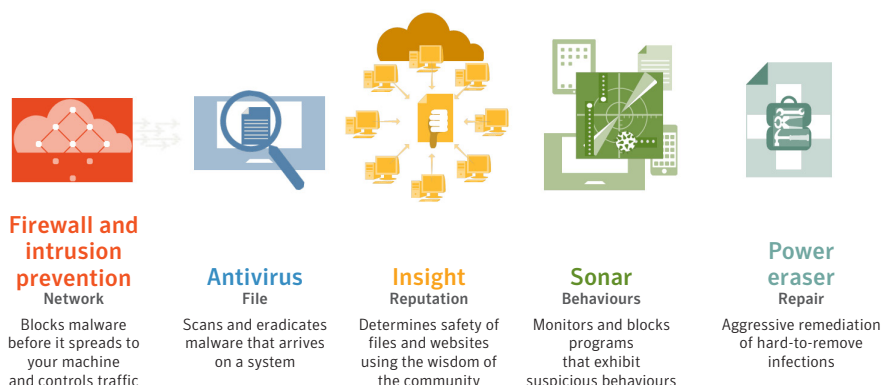
1) Network: Symantec's network threat protection includes *Vantage* technology that analyses incoming data and blocks threats while they travel through the network before hitting the system. Rules-based firewall and browser protection are also included to protect against web-based attacks.

2) File: Signature-based antivirus looks for and eradicates malware on a system to protect against viruses, worms, Trojans, spyware, bots, adware and rootkits.

3) Reputation: Symantec's unique *Insight* correlates tens of billions of linkages between users, files and websites to detect rapidly mutating threats. By analysing key file attributes, Insight can accurately identify whether a file is good and assign a reputation score to each file, effectively protecting against targeted attacks while reducing scan overhead by up to 70%.

4) Behaviour: SONAR leverages artificial intelligence to provide zero-day protection. It effectively stops new and unknown threats by monitoring nearly 1,400 file behaviours while they execute in real time to determine file risk.

5) Repair: Power Eraser™ aggressively scans infected endpoints to locate Advanced Persistent Threats and remove tenacious malware. Remote support enables the administrator to trigger the Power Eraser scan and remedy the infection remotely from the Symantec Endpoint Protection management console.



Extended Policy Control Features

In addition to core protection technologies, Symantec Endpoint Protection 12.1.5 also provides granular policy controls, including:

- 1) System Lockdown:** Enhances protection for business critical systems by only allowing whitelisted applications (known to be good) to run or by blocking blacklisted applications (known to be bad) from running.
- 2) Application and Device Control:** Helps prevent internal and external security breaches by monitoring application behaviour and controlling file access, registry access, processes that are allowed to run and devices information can be written to.
- 3) Host Integrity Checking and Policy Enforcement:** Allows users to run script on their endpoints to verify and report compliance; quarantine location and peer-to-peer enforcement lockdown and isolate a non-compliant or infected system.
- 4) Location Awareness:** Automatically detects what location a system is connecting from, such as a hotel, hotspot, wireless network or VPN and adjusts the security to offer the best protection for the environment.



System Lockdown

Tightly control applications through advanced whitelisting and blacklisting



Application Control

Monitor and control the behaviour of applications



Device Control

Restrict and enable access to the hardware that can be used



Host Integrity

Ensures endpoints are protected and compliant

Virtual Optimisation

Symantec Endpoint Protection protects your high-density virtual environment while maintaining performance levels superior to agentless solutions and providing end-to-end security visibility.

- 1) VMware vShield Integration:** Allows higher VM density and reduces I/O and CPU usage.
 - 2) Virtual image exception:** Whitelists files from a standard virtual machine image to optimise scanning.
 - 3) Resource levelling:** Randomises scan and update schedules to prevent resource utilisation spikes.
 - 4) Shared Insight cache:** Scans files once, shares the results between clients and de-duplicates file scanning to reduce bandwidth and latency.
 - 5) Virtual client tagging:** Automatically detects and reports whether the client is running in a virtual environment, making it easier to set different policies for virtual machines.
 - 6) Offline image scanning:** Finds threats in offline virtual machine images.
 - 7) Scan throttling for virtualisation:** Detects disk load and reduces scan speed to prevent utilisation spikes.
-

Client Workstation and Server System Requirements*

Windows Operating Systems

Windows XP (32-bit, SP2 or later; 64-bit)
Windows XP Embedded (SP2 or later)
Windows Vista (32-bit, 64-bit)
Windows 7 (32-bit, 64-bit)
Windows 7 Embedded
Windows 8 (32-bit, 64-bit)
Windows Server 2003 (32-bit, 64-bit, R2 or SP1 or later)
Windows Server 2008 (32-bit, 64-bit, including R2)
Windows Server 2012 (32-bit, including R2)
Windows Small Business Server 2011 (64-bit)
Windows Essential Business Server 2008 (64-bit)

Macintosh Operating Systems

MAC OS X 10.6.8, 10.7, 10.8, 10.9
MAC OS X Server 10.6, 10.7, 10.8, 10.9

Linux Operating Systems (32-bit and 64-bit versions)

Red Hat® Enterprise Linux
SuSE Linux Enterprise (server/desktop)
Novell® Open Enterprise Server
Oracle® Linux®
VMWare ESX
Ubuntu®
Debian®
Fedora®

Virtual Environments

vSphere Server (ESXi)
Microsoft Hyper-V
Citrix XenServer, XenDesktop, XenApp

Hardware Requirements

1 GHz CPU or higher
512 MB of RAM (1 GB recommended)
850 MB of free space on the hard disk

Manager System Requirements

Windows Operating Systems

Windows 7
Windows XP (32-bit, SP3 or later; 64-bit, SP2 or later)
Windows Server 2003 (32-bit, 64-bit, R2 or SP1 or later)
Windows Server 2008 (32-bit, 64-bit, including R2)
Windows Small Business Server 2008 (64-bit)
Windows Small Business Server 2011 (64-bit)
Windows Essential Business Server 2008 (64-bit)
Windows Server 2012 (64-bit, including R2)

Hardware

1 GHz CPU or higher
1 GB of RAM (2 GB recommended)
16 GB or more free space on the hard drive

Web Browser

Microsoft Internet Explorer
Mozilla Firefox®

Database

Embedded database included or chose from the following:
SQL Server 2005, SP4 or later
SQL Server 2008 and R2
SQL Server 2012
SQL Server 2014

* For a complete list of system requirements visit our [support page](#)

Try it now for FREE

Try the leading solution in endpoint protection by downloading a free 30-day trial today:

<http://www.symantec.com/endpoint-protection/trialware>

Read third party reviews and find out why Gartner has ranked Symantec as a leader in the Endpoint Protection magic quadrant:

<http://www.symantec.com/endpoint-protection/news-reviews>

More Information

Visit our website

<http://enterprise.symantec.com>

To speak with a Product Specialist in the U.S.

Call toll-free 1 (800) 745 6054

To speak with a Product Specialist outside the U.S.

For specific country offices and contact numbers, please visit our website.

About Symantec

Symantec protects the world's information and is a global leader in security, backup and availability solutions. Our innovative products and services protect people and information in any environment – from the smallest mobile device, to the enterprise data center, to cloud based systems. Our world-renowned expertise in protecting data, identities and interactions gives our customers confidence in a connected world. More information is available at www.symantec.com or by connecting with Symantec at: go.symantec.com/socialmedia.

Symantec World Headquarters

350 Ellis St.

Mountain View, CA 94043 USA

+1 (650) 527 8000

+1 (800) 721 3934

www.symantec.com